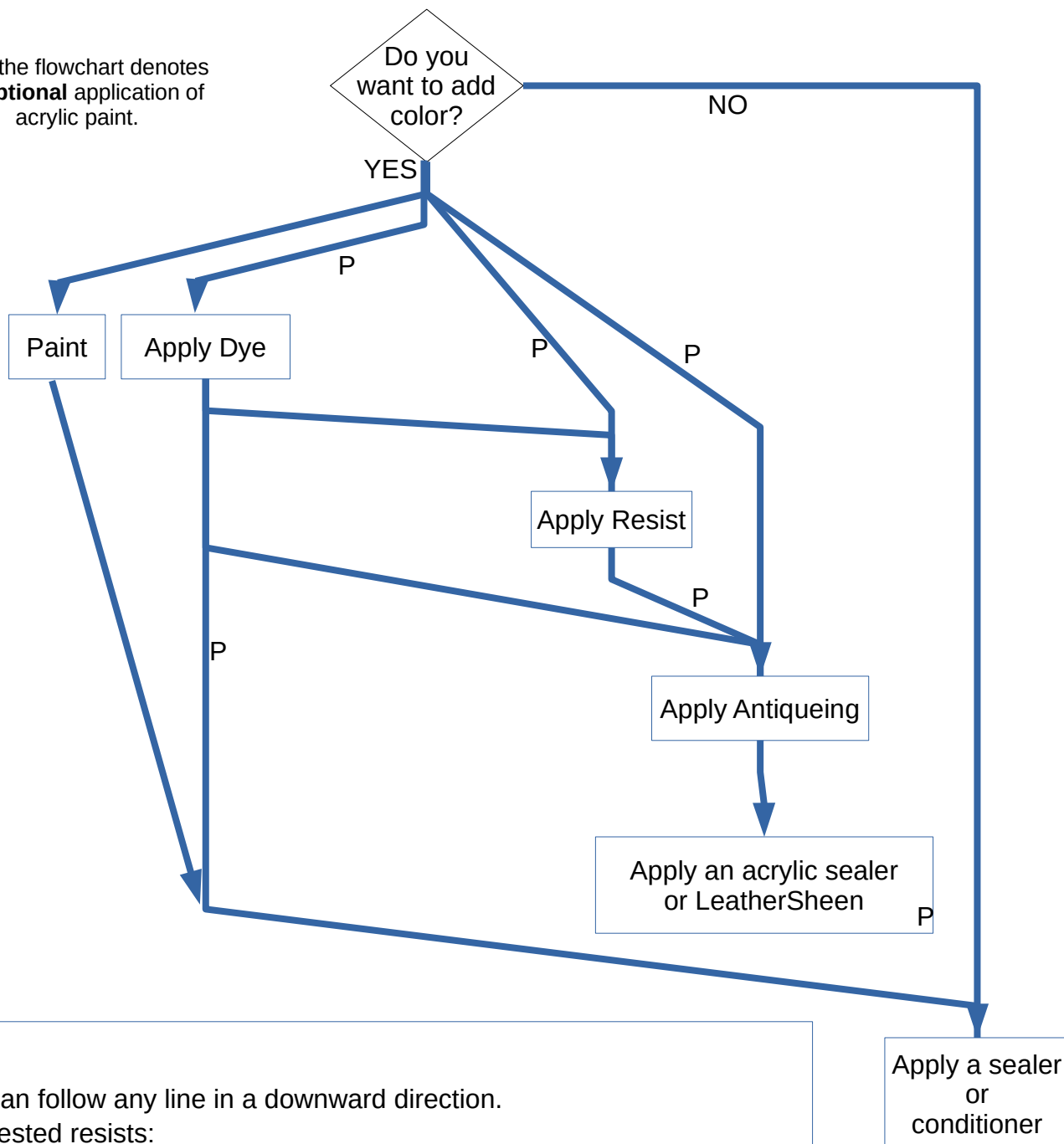


Liquids Decision Chart by Johan Potgieter

'P' in the flowchart denotes an **optional** application of acrylic paint.



NOTES:

- You can follow any line in a downward direction.
- Suggested resists:
 - For Fiebings Paste: ProResist
 - For Hi-Lite Stain / Antique Gel: NeatLac, Top Finish, Resolene
- Using acrylic paint can be inserted between any two steps, except between applying antiqueing and applying a sealer.
- Whatever of these routes that you pick, test it first on a leather cut-off.
- Oil has deliberately been left out of the first part of this chart. It is an archaic method used when tanning was different, dye recipes were different, and projects were different.
- Suggested conditioners: Hide Rejuvenator, Dubbin, Conditioning Cream, Smith's, Neatsfoot Oil, Olive Oil, Aussie, etc.